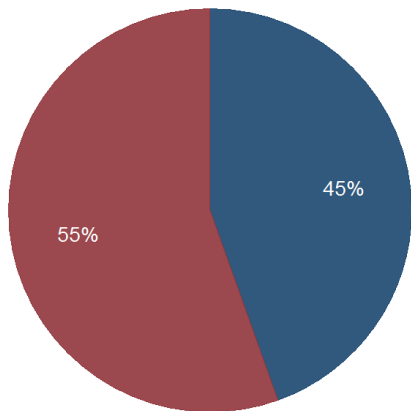


Kentucky Quarterly Coal Report

July to September 2015

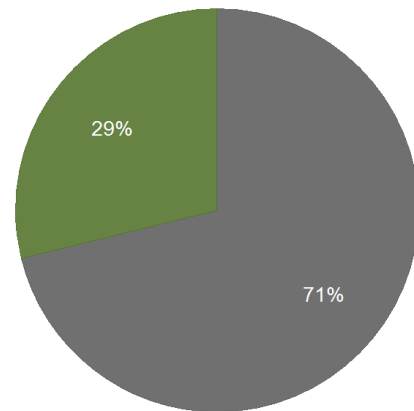
Kentucky Coal Production by Region, Q3-2015



Legend: Eastern Kentucky (Blue), Western Kentucky (Red)

Kentucky Energy Database, EEC-DEDI & US-DOL-MSHA-MDRS Queried on: 30 Oct 2015

Kentucky Coal Production by Mine Type, Q3-2015



Legend: Underground (Grey), Surface (Green)

Kentucky Energy Database, EEC-DEDI & US-DOL-MSHA-MDRS Queried on: 30 Oct 2015

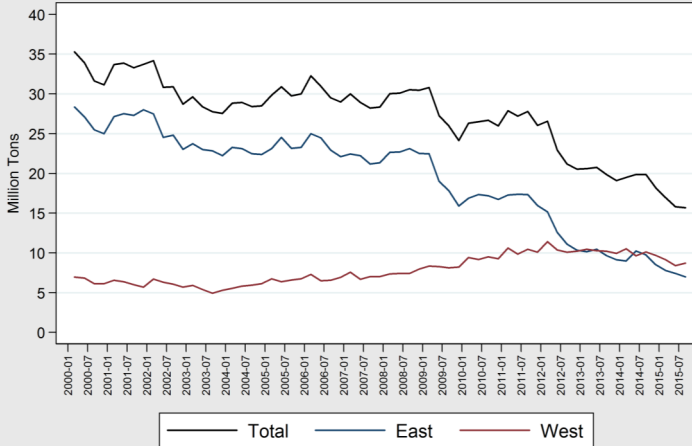
Region	Q3 Tonnage	Quarter Change
Total	15,694,476	-0.8%
Western Kentucky	8,706,595	+3.7%
Eastern Kentucky	6,987,881	-5.8%

Preliminary data indicate that total coal production at Kentucky mines slowed by 0.8 percent during the third quarter of 2015 to less than 15.7 million tons.

Mine Type	Q3 Tonnage	Quarter Change
Total	15,694,476	-0.8%
Underground	11,116,527	+1.4%
Surface	4,527,949	-5.8%

Coal production at surface mines decreased by 5.8 percent during the third quarter of 2015 and accounted for 29 percent of total Kentucky production.

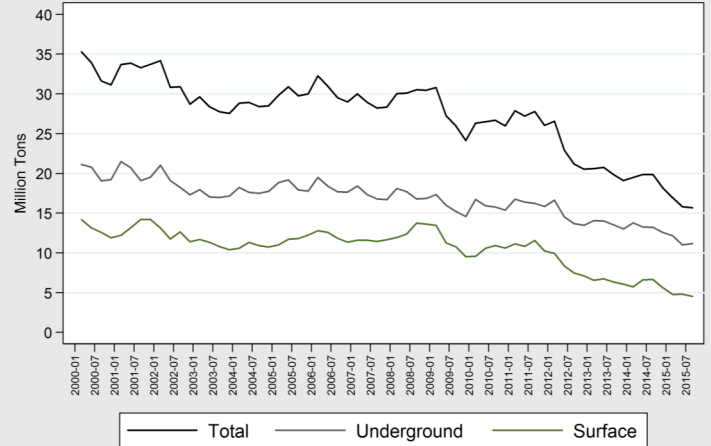
Kentucky Quarterly Coal Production by Region, 2000-2015



Kentucky Energy Database, EEC-DEDI & US-DOL-MSHA-MDRS Queried on: 30 Oct 2015

Western Kentucky mines increased production by 3.7 percent, to produce 8.7 million tons for the quarter. Eastern Kentucky mines decreased production by 5.8 percent, to produce less than 7 million tons. During the third quarter of 2015, underground mines in Kentucky produced 11 million tons, an increase of 1.4 percent from the second quarter of 2015. Assuming no additional mine closures, Kentucky remains on track to mine less than 64 million tons during 2015.

Kentucky Quarterly Coal Production by Mine Type, 2000-2015

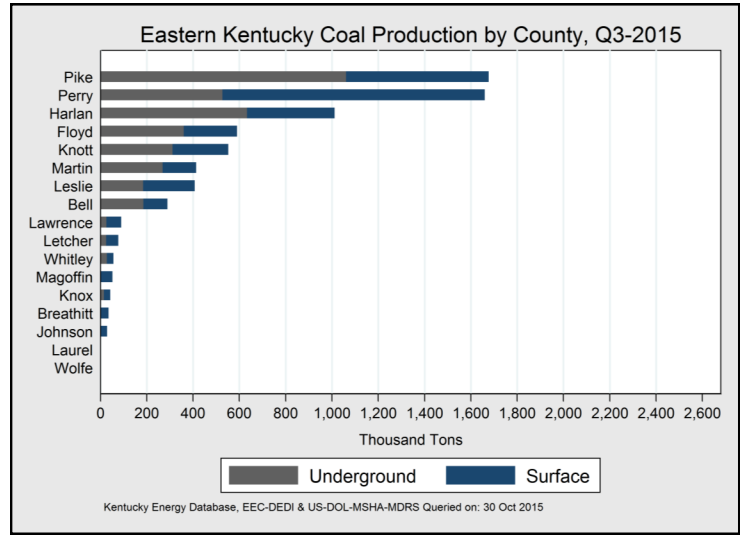
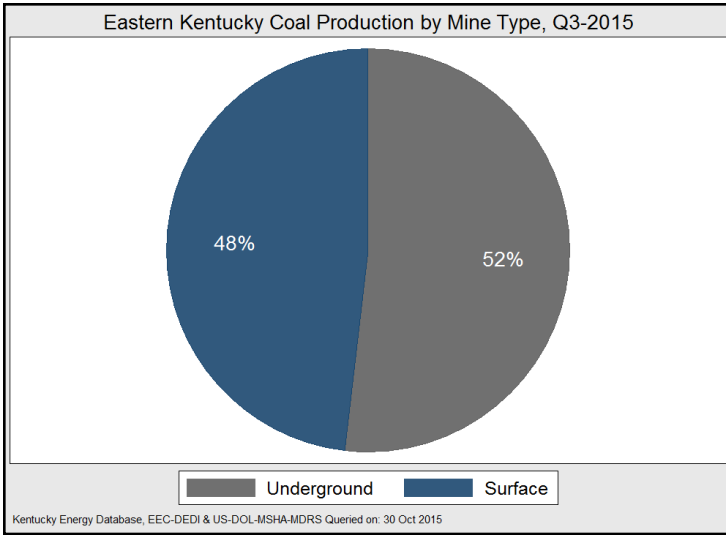


Kentucky Energy Database, EEC-DEDI & US-DOL-MSHA-MDRS Queried on: 30 Oct 2015

The vast majority of Kentucky coal is used to generate electricity in the United States and coal-fired power plant closures in recent years have significantly reduced demand. Approximately 80 percent of the coal mined in Kentucky in 2015 is being used to generate electricity at 82 power plants in 14 states—located primarily in the Southeast. Of this amount, 21 percent went to power plants that will close coal-fired generating capacity before 2020, with most of these retirements scheduled to occur in 2016.

Eastern Kentucky Coal Production

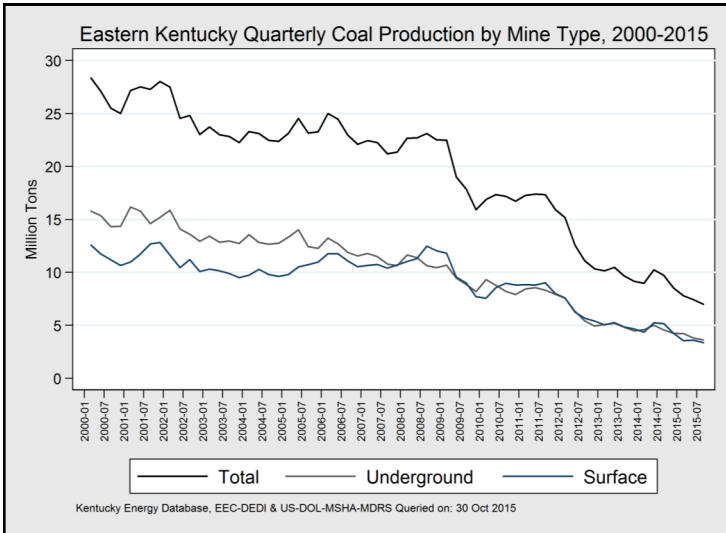
July to September 2015



Mine Type	Q3 Tonnage	Quarter Change
Total	6,987,881	-5.8%
Underground	3,624,555	-5.0%
Surface	3,363,326	-6.7%

Eastern County	Q3 Tonnage	Quarter Change
Pike	1,677,063	-17.0%
Perry	1,660,261	-11.4%
Harlan	1,011,595	+30.1%
Floyd	590,356	+23.2%
Knott	552,140	-8.8%
Martin	413,470	+15.2%
Leslie	407,256	+8.5%
Bell	289,828	-19.8%
Lawrence	89,847	-5.6%
Letcher	77,185	-56.5%
Whitley	56,094	-34.3%
Magoffin	51,618	+915.7%
Knox	42,631	-25.6%
Breathitt	34,934	-63.5%
Johnson	29,157	-10.3%
Laurel	2,317	+18.2%
Wolfe	2,129	-87.9%

Eastern Kentucky coal production decreased by 5.8 percent during the third quarter of 2015. Underground mines decreased production by 5 percent, and surface by 6.7.

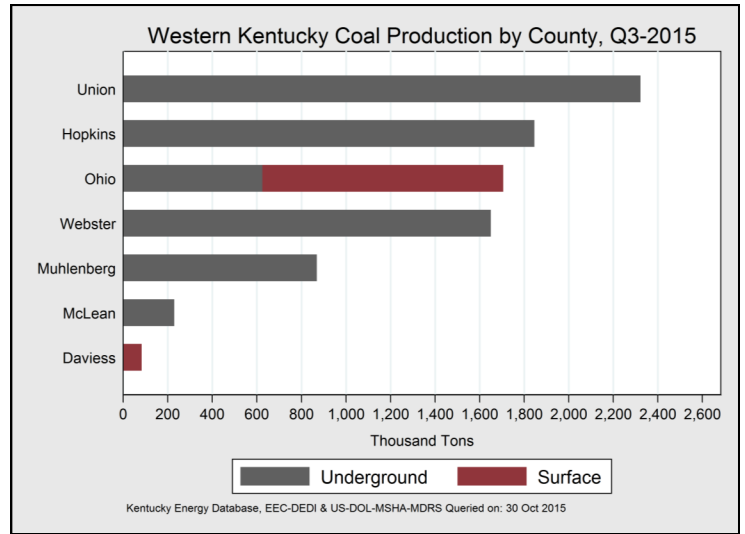
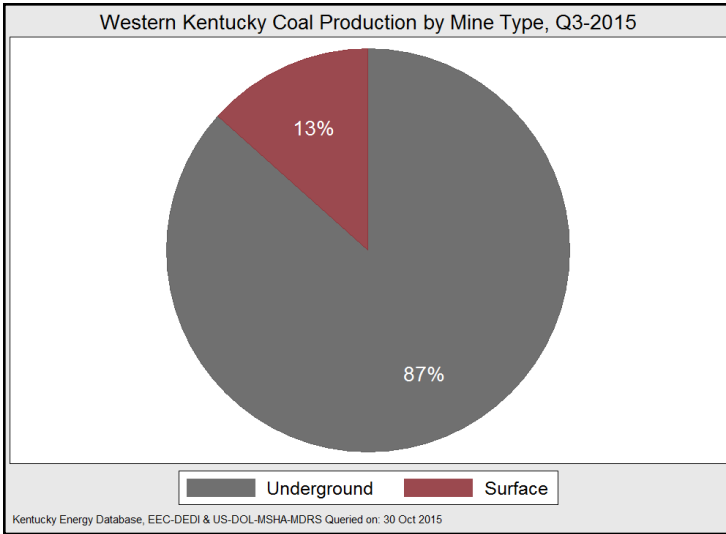


Underground mining techniques remained the leading method of coal extraction in eastern Kentucky during the second quarter, accounting for 52 percent of production.

Pike County reduced coal production by 17 percent. Although Pike County remains the largest coal-producing county in eastern Kentucky, Pike is now the fourth-largest producing county in Kentucky.

Western Kentucky Coal Production

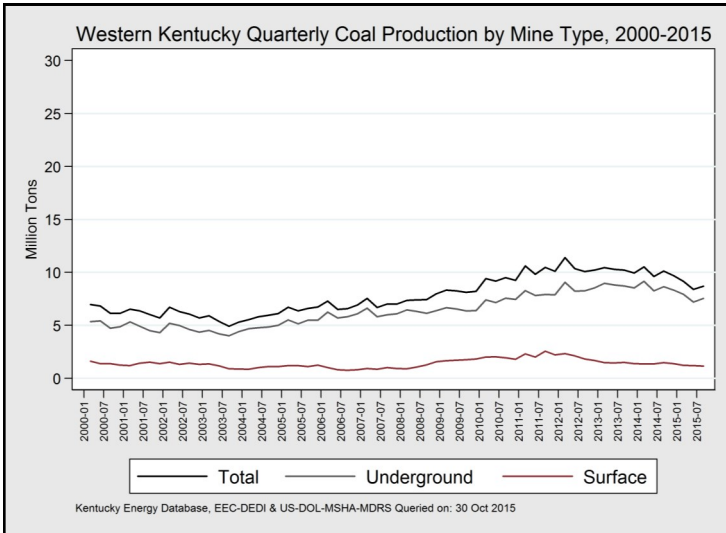
July to September 2015



Mine Type	Q3 Tonnage	Quarter Change
Total	8,706,595	+3.7%
Underground	7,541,972	+4.9%
Surface	1,164,623	-3.2%

Western County	Q3 Tonnage	Quarter Change
Union	2,322,066	+6.3%
Hopkins	1,846,484	+8.7%
Ohio	1,706,452	-2.9%
Webster	1,649,980	+7.1%
Muhlenberg	869,580	-3.5%
McLean	229,464	-1.6%
Daviess	82,569	+2.1%

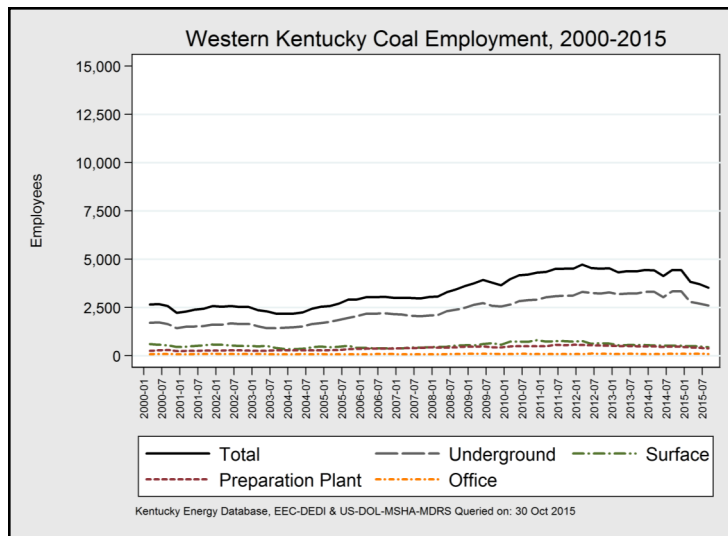
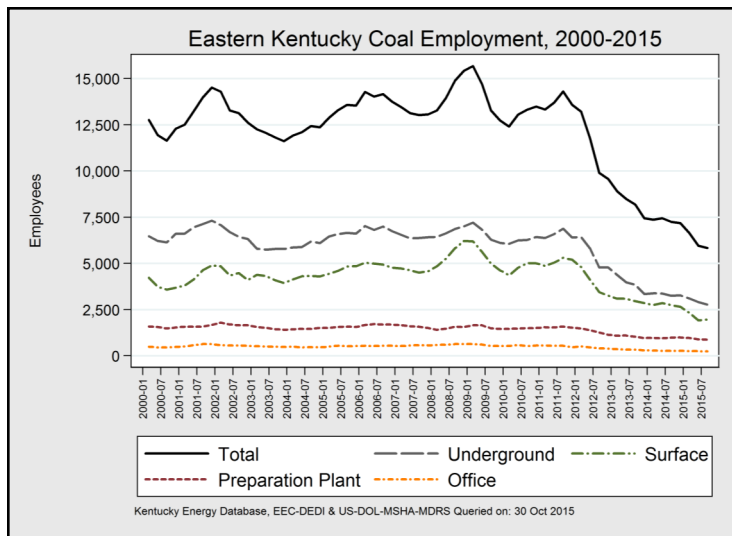
Western Kentucky mined more than 8.7 million tons during the third quarter of 2015, 87 percent from underground mines and 13 percent from surface mines.



Western Kentucky coal production increased by 3.7 percent during the third quarter of 2015. Union County remained Kentucky's leading coal-producing county. The River View Mine in Union County, owned by Alliance Resource Partners, remained Kentucky's single-largest coal mine, producing more than 2.3 million tons during the third quarter. The only coal producer in Union County, this one mine alone now produces more coal than any Kentucky county.

Kentucky Coal Mine Employment

July to September 2015



Eastern Counties	Q3 Employment	Quarter Change	
Total	5,835	-120	-2.1%
Pike	1,676	+125	+8.1%
Perry	962	-43	-4.3%
Harlan	885	+97	+12.3%
Floyd	437	-13	-2.9%
Martin	383	-24	-5.9%
Bell	337	-17	-4.8%
Leslie	251	+9	+3.7%
Knott	223	-45	-16.8%
Whitley	149	-37	-19.9%
Letcher	137	-93	-40.4%
Knox	105	-34	-24.1%
Johnson	56	+13	+30.2%
Lawrence	53	-31	-36.9%
Boyd	41	-6	-12.8%
Magoffin	37	+15	+68.2%
Estill	37	+9	+32.1%
Breathitt	26	-35	-57.4%
Clay	18	-1	-5.3%
Wolfe	9	-3	-25.0%
Laurel	7	-6	-46.2%
McCreary	4	0	+0%

Western Counties	Q3 Employment	Quarter Change	
Total	3,521	-198	-5.2%
Hopkins	840	-98	-10.5%
Webster	680	+3	+0.4%
Union	662	-17	-2.5%
Ohio	646	-51	-7.3%
Muhlenberg	463	-14	-2.9%
McLean	140	+0	+0%
Marshall	42	-4	-8.7%
Daviess	29	+2	+7.4%
Livingston	13	-19	-59.4%
Henderson	6	0	+0%

Description	Q3 Employment	Quarter Change	
Kentucky Total	9,356	-318	-3.3%
Underground	5,376	-229	-4.1%
Surface	2,398	-7	-0.3%
Preparation Plant	1,249	-62	-4.7%
Office	333	-20	-6.0%

As of October 1st 2015, an estimated 9,356 persons were employed at Kentucky coal mines. Preliminary data indicate that Kentucky coal mines reduced on-site employment by 318 workers, or 3.3 percent of their workforce, during the third quarter of 2015. There were 207 lost underground mining jobs, 7 lost surface mining jobs, 62 lost coal preparation plants jobs, and 20 lost on-site office staff jobs.

During the third quarter of 2015, there were 5,835 persons employed at eastern Kentucky coal mines, a decrease of 2.1 percent from the second quarter of 2015. Coal mines in western Kentucky decreased total employment by 195 jobs or 5.2 percent. To check for an updated version of this report or for more detailed information on coal production in Kentucky, please visit us online at:

energy.ky.gov/Pages/CoalFacts.aspx

Date		Kentucky Total				Eastern Kentucky								Western Kentucky							
		Average Employment		Tons of Coal Produced		Average Employment		Tons of Coal Produced		Dollars per Ton				Average Employment		Tons of Coal Produced		Dollars per Ton			
										Delivered		Processed						Delivered		Processed	
		Annual	Quarter	Annual	Quarter	Annual	Quarter	Annual	Quarter	Annual	Quarter	Annual	Quarter	Annual	Quarter	Annual	Quarter	Annual	Quarter	Annual	Quarter
2008	Q1	17,738	16,356	121,139,838	30,032,214	14,381	13,279	90,972,560	22,674,090	\$70.81	\$59.13	\$54.98	\$49.89	3,357	3,077	30,167,278	7,358,124	\$40.10	\$34.45	\$30.81	\$27.44
	Q2		17,238		30,090,129		13,942		22,682,090		\$64.66		\$53.60		3,296		7,408,039		\$35.85		\$28.81
	Q3		18,327		30,539,544		14,883		23,112,800		\$74.26		\$57.76		3,444		7,426,744		\$39.62		\$32.55
	Q4		19,030		30,477,951		15,420		22,503,580		\$75.46		\$58.67		3,610		7,974,371		\$41.52		\$34.42
2009	Q1	17,877	19,422	108,181,019	30,809,807	14,094	15,668	75,228,920	22,477,210	\$82.65	\$80.55	\$67.14	\$66.58	3,783	3,754	32,952,099	8,332,597	\$48.13	\$49.06	\$40.24	\$41.93
	Q2		18,630		27,264,780		14,702		18,998,720		\$81.66		\$67.17		3,928		8,266,060		\$48.57		\$41.42
	Q3		17,075		25,979,240		13,278		17,850,570		\$82.44		\$67.37		3,797		8,128,670		\$46.11		\$38.93
	Q4		16,380		24,127,192		12,729		15,902,420		\$82.50		\$67.42		3,651		8,224,772		\$45.87		\$38.67
2010	Q1	17,229	16,378	105,472,262	26,304,888	13,063	12,404	68,140,830	16,883,820	\$87.65	\$86.08	\$73.40	\$71.83	4,165	3,974	37,331,432	9,421,068	\$50.04	\$51.02	\$42.75	\$43.78
	Q2		17,217		26,510,521		13,051		17,339,430		\$88.53		\$74.30		4,166		9,171,091		\$51.02		\$43.75
	Q3		17,520		26,683,752		13,311		17,189,270		\$88.13		\$73.93		4,209		9,494,482		\$48.98		\$41.69
	Q4		17,799		25,973,101		13,487		16,728,310		\$87.73		\$73.55		4,312		9,244,791		\$49.10		\$41.78
2011	Q1	18,194	17,684	108,965,633	27,889,220	13,728	13,331	67,954,870	17,282,860	\$88.66	\$87.77	\$74.78	\$73.72	4,466	4,353	41,010,763	10,606,360	\$52.62	\$50.07	\$44.92	\$43.36
	Q2		18,191		27,222,033		13,695		17,385,220		\$88.12		\$75.65		4,496		9,836,813		\$51.23		\$44.26
	Q3		18,812		27,805,240		14,303		17,341,360		\$90.19		\$75.63		4,509		10,463,880		\$52.12		\$44.65
	Q4		18,089		26,049,140		13,583		15,945,430		\$88.05		\$74.03		4,506		10,103,710		\$53.58		\$45.13
2012	Q1	15,682	17,932	91,226,470	26,571,280	11,099	13,203	49,180,150	15,171,750	\$87.38	\$89.16	\$73.02	\$74.85	4,583	4,729	42,046,320	11,399,530	\$56.48	\$56.12	\$47.14	\$47.18
	Q2		16,281		22,926,260		11,734		12,570,260		\$89.03		\$72.58		4,547		10,356,000		\$56.49		\$47.66
	Q3		14,406		21,173,120		9,892		11,094,450		\$86.70		\$73.26		4,514		10,078,670		\$56.68		\$46.93
	Q4		14,109		20,555,810		9,566		10,343,690		\$84.05		\$72.29		4,543		10,212,120		\$55.64		\$47.04
2013	Q1	12,637	13,225	80,302,335	20,590,860	8,253	8,899	39,423,367	10,144,620	\$81.94	\$87.97	\$68.76	\$72.11	4,384	4,326	40,878,968	10,446,240	\$57.22	\$57.46	\$47.06	\$46.89
	Q2		12,882		20,752,670		8,490		10,464,560		\$84.60		\$68.37		4,392		10,288,110		\$57.24		\$46.53
	Q3		12,548		19,876,822		8,180		9,667,612		\$78.62		\$69.76		4,368		10,209,210		\$55.81		\$47.18
	Q4		11,892		19,081,983		7,443		9,146,575		\$81.23		\$68.47		4,449		9,935,408		\$57.09		\$47.05
2014	Q1	11,667	11,790	77,431,885	19,494,449	7,310	7,366	37,462,852	8,969,519	\$77.99	\$77.28	\$64.59	\$65.09	4,357	4,424	39,969,033	10,524,930	\$58.06	\$58.48	\$48.38	\$47.64
	Q2		11,576		19,866,435		7,449		10,242,400		\$77.68		\$65.65		4,127		9,624,035		\$57.90		\$48.28
	Q3		11,681		19,866,504		7,239		9,742,734		\$78.64		\$64.24		4,442		10,123,770		\$58.17		\$47.86
	Q4		11,619		18,204,497		7,186		8,508,199		\$79.87		\$65.14		4,433		9,696,298		\$58.33		\$48.96
2015	Q1	9,356	10,465	15,694,476	16,938,524	5,835	6,639	6,987,881	7,788,933	\$70.91	\$76.49	\$59.02	\$62.81	3,521	3,826	8,706,595	9,149,591	\$57.30	\$57.40	\$49.53	\$49.14
	Q2		9,674		15,817,614		5,958		7,421,363		\$73.82		\$60.17		3,716		8,396,251		\$57.62		\$49.25
	Q3		9,356		15,694,476		5,835		6,987,881		\$70.91		\$59.02		3,521		8,706,595		\$57.30		\$49.53

In order to provide the public with timely access to these data, this report uses the best-available estimate for each factor at the time of publication. Data for Q3-2015 are preliminary and subject to revision. Data for previous dates have been revised.

This report is produced by the Kentucky Energy and Environment Cabinet using data from numerous sources including the U.S. Department of Labor's Mine Safety Health Administration, the Kentucky Department of Revenue, and the Kentucky Division of Mine Safety.

To check for an updated version of this report or for more detailed information on coal production in Kentucky, please visit us online at: energy.ky.gov/Pages/CoalFacts.aspx